





# MAIN CONTENTS

---

- 1 Event
- 2 Fit - out
- 3 Designs
- 4 Interior

# WELCOME

## VISION

To provide bespoke solutions for interiors design projects.

To provide clients with a one stop solution for their project requirements.

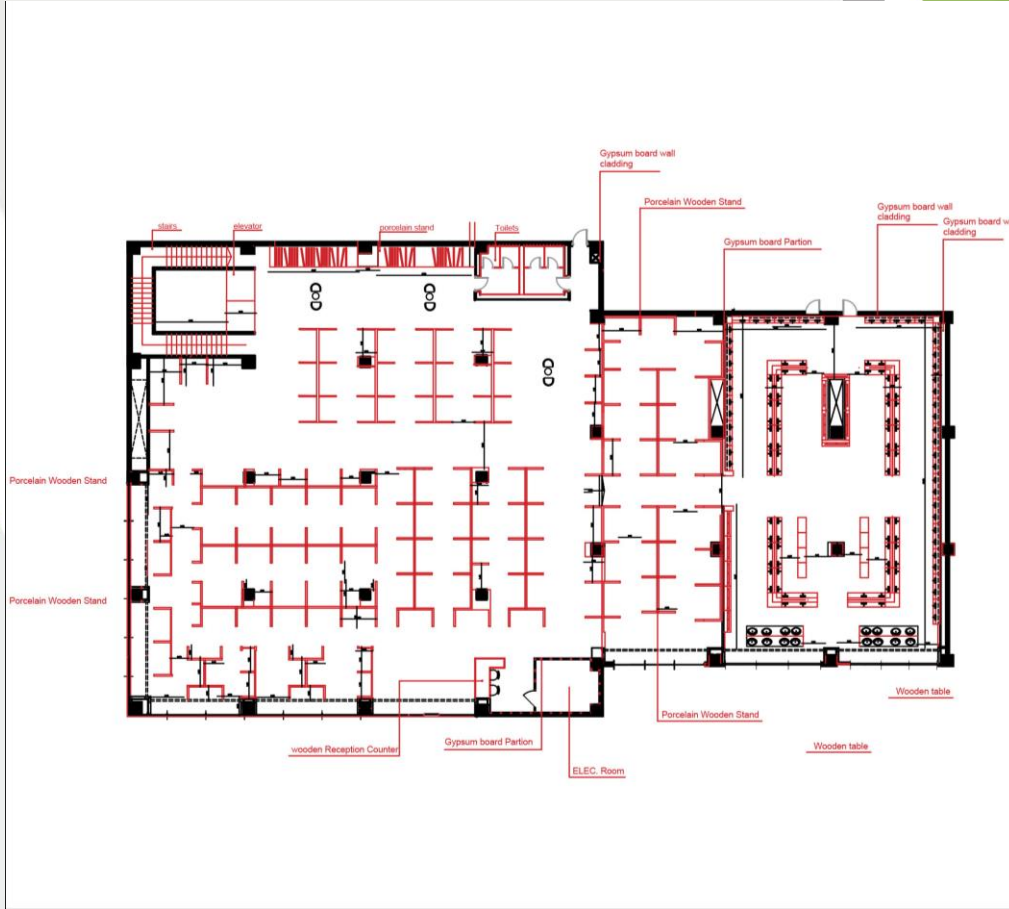
To become a leading Interior Design and Contracting company in the region best known for its Service, Quality and Integrity.

## MISSION

Fit out Interior Decoration's mission is to ensure customer satisfaction through its high-end quality products and service.

# EL SALLAB Town Center

Area of store =2300



1. FOR LIST OF DRAWINGS, SYMBOLS & ABBREVIATIONS, LEGEND OF FINISHES REFER TO DWG. NO. A01 & A02
2. UNLESS OTHERWISE INDICATED ALL DIMENSIONS AND LEVELS ARE IN METERS
3. DRAWINGS SHALL NOT BE SCALED, ONLY WRITTEN DIMENSION SHALL BE FOLLOWED

No.	SUBMISSIONS	DATE

LANDLORD

CLIENT  
**El-Salab**

Main Contractor  
**Capital Green**

EDIT OUT CONSULTANT

PROJECT TITLE  
**EL-SALAB**

UNIT NO. AN04 (G 036 - 037- 038)

DRAWING TITLE  
Furniture PLAN - Ground Floor

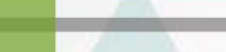
NAME  
DRAWING No.

DESIGNED BY **Alaa Moustafa**

DRAWN BY **Alaa Moustafa** SCALE @ A3

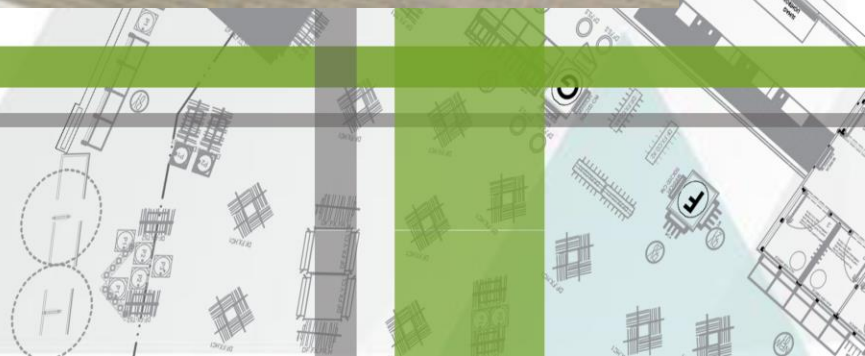
CHECKED BY **Alaa Moustafa** DATE Aug 2020

STAGE  
Arch



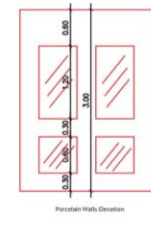
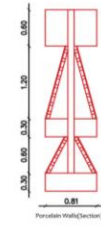
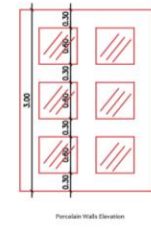
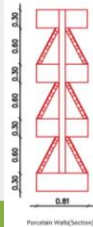
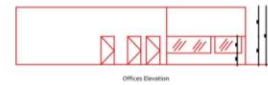
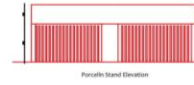
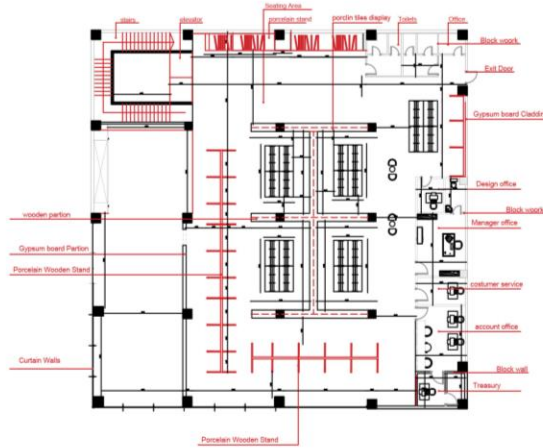
**Start:** 9-2020 **Finish:** 12-2020

**Review:** the project was handled from design coordination up to grand opening (architecture work - electromechanical work – furniture work) .



# EL SALLAB Town Center

Area of store = 2300



No.	SUBMISSIONS	DATE
LANDLORD		
CLIENT		
El-Salab		
Main Contractor		
Capital Green		
DESIGN CONSULTANT		
PROJECT TITLE		
EL-SALAB		
DRAWINGS SHALL NOT BE SCALED, ONLY WRITTEN DIMENSION SHALL BE FOLLOWED		
No.	SUBMISSIONS	DATE
LANDLORD		
CLIENT		
El-Salab		
Main Contractor		
Capital Green		
DESIGN CONSULTANT		
PROJECT TITLE		
EL-SALAB		
DRAWING NO.	ANNA	10-016-007-006
DRAWING TITLE		
Furniture Details		
NAME	DRAWING No.	







# EL SALLAB Town Center

Area of store =2300



📍 11 Gamal Salem , Mossdak , Dokki , Giza    📧 [info@capitalgreenlimited.com](mailto:info@capitalgreenlimited.com)  
☎ 02 37493275    🌐 [www.capitalgreenlimited.com](http://www.capitalgreenlimited.com)



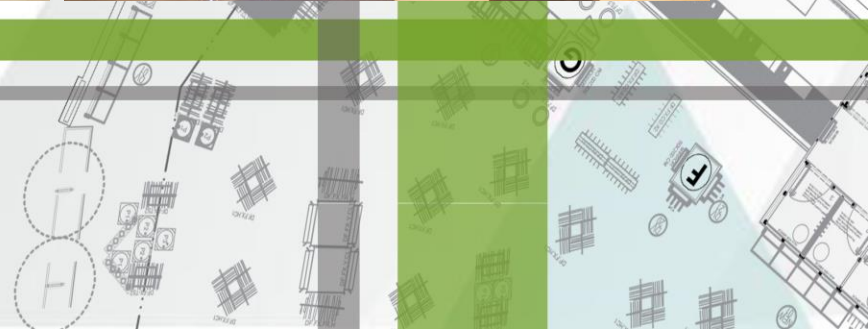




# EL SALLAB Town Center

Area of store =2300



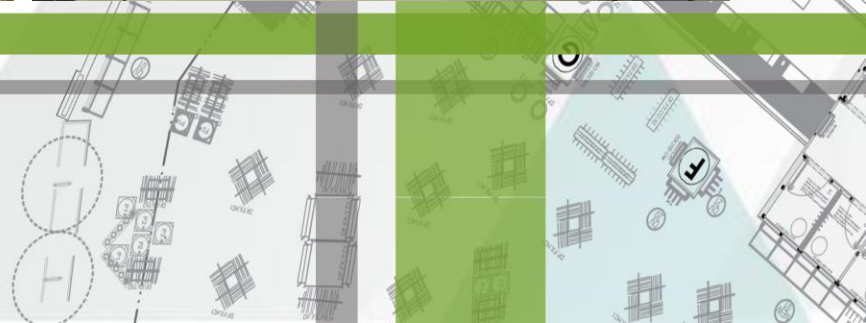




# EL SALLAB Town Center

Area of store =2300







# LA POIRE

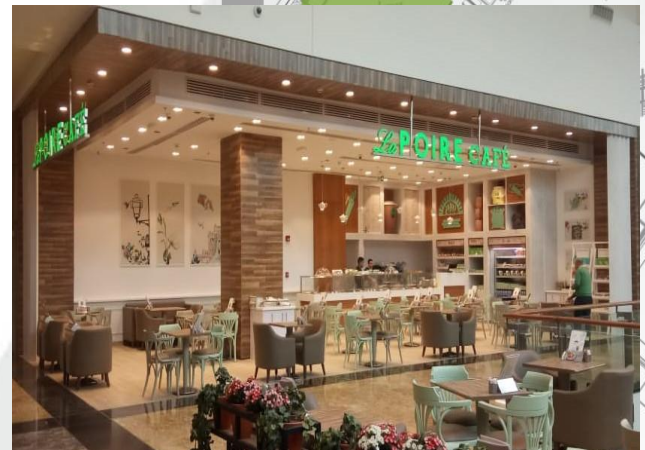
City Center Almaza ( MAF )



Start: 10-2019

Finish: 12-2019

Review: the project was handled from design coordination up to grand opening (architecture work - electromechanical work – furniture work) .





# LA POIRE

City Center Almaza ( MAF )

Area of store =175 sqm



📍 11 Gamal Salem , Mossdak , Dokki , Giza  
☎ 02 37493275

✉ info@capitalgreenlimited.com  
🌐 www.capitalgreenlimited.com







# DEFACTO

San Stefano Mall (Talaat Mostafa)

Area of store = 700 sqm



📍 11 Gamal Salem , Mossdak , Dokki , Giza    📧 [info@capitalgreenlimited.com](mailto:info@capitalgreenlimited.com)  
☎ 02 37493275    🌐 [www.capitalgreenlimited.com](http://www.capitalgreenlimited.com)

Start: 8-2020

Finish: 10-2020

Review: the project was handled from design coordination up to grand opening (architecture work – electromechanical work – furniture work) .





DEFACTO  
City Center Almaza ( MAF )  
Area of store =1200



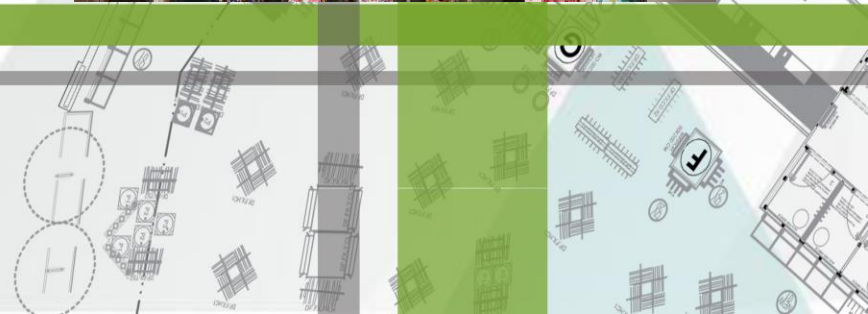
📍 11 Gamal Salem , Mossdak , Dokki , Giza    📧 info@capitalgreenlimited.com  
☎ 02 37493275    🌐 www.capitalgreenlimited.com

Start: 8-2020

Finish: 10-2020

Review: the project was handled from design coordination

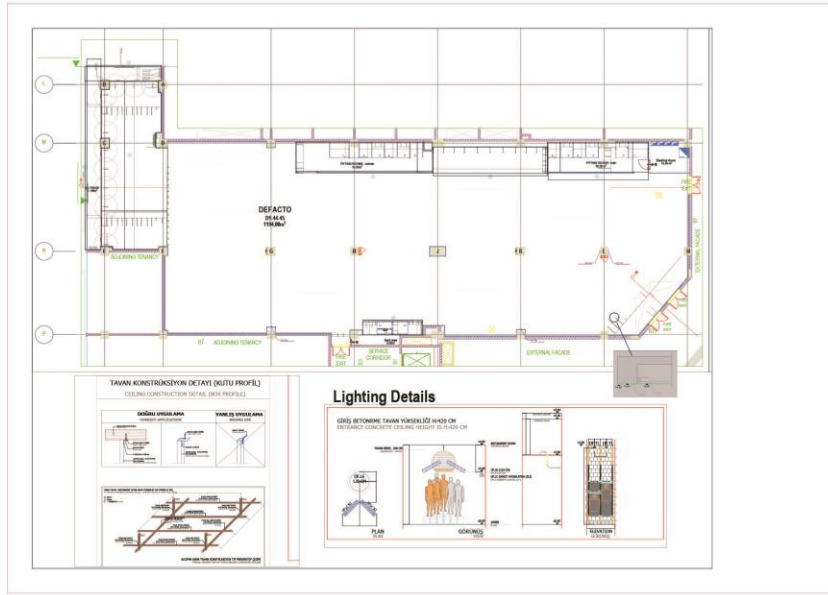
up to grand opening (architecture work - electromechanical work – furniture work) .



# DEFACTO

## City Center Almaza ( MAF )

Area of store =1200



1. FOR LIST OF DRAWINGS, SYMBOLS & ABBREVIATIONS, LEGEND OF FINISHES REFER TO DWG. NO. A01 & A02
2. UNLESS OTHERWISE INDICATED ALL DIMENSIONS AND LEVELS ARE IN METERS
3. DRAWINGS SHALL NOT BE SCALED, ONLY WRITTEN DIMENSION SHALL BE FOLLOWED


NO.	SUBMISSIONS	DATE
-----	-------------	------

LANDLORD

CLIENT

Main Contractor

Capital Green

BUY-OUT CONSULTANT

PROJECT TITLE

UNIT NO.

DRAWING TITLE

NAME	DRAWING No.
------	-------------

DESIGNED BY	SCALE	@ A3
-------------	-------	------

DRAWN BY	DATE	Aug 2008
----------	------	----------

CHECKED BY	Alaa Moustafa	SCALE	@ A3
------------	---------------	-------	------

DATE	Aug 2008	STAGE	Arch
------	----------	-------	------

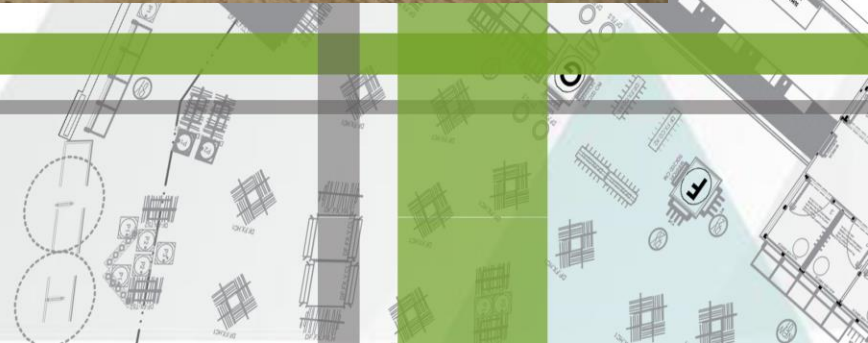
0 1 2 3 4m



**Start:** 6-2019

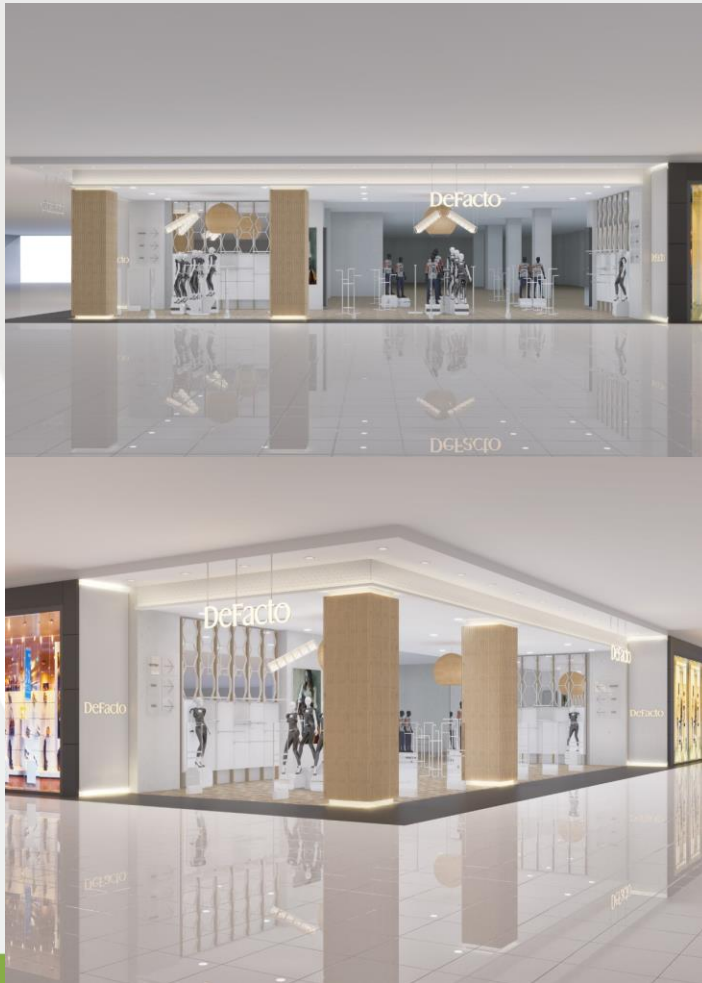
**Finish:** 9-2019

**Review:** the project was handled from design coordination up to grand opening (architecture work - electromechanical work – furniture work) .





**DEFACTO**  
**City Center Almaza ( MAF )**  
Area of store =1200



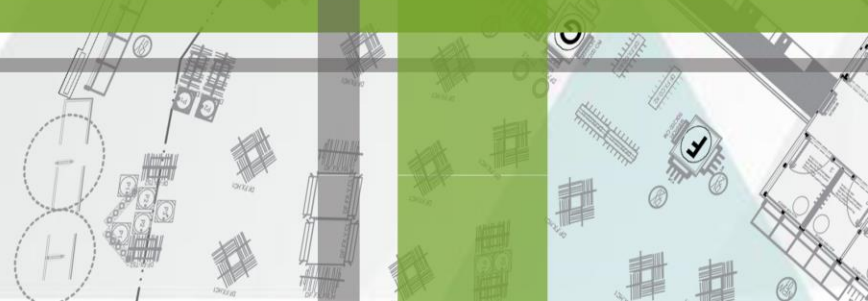






**DEFACTO**  
City Center Almaza ( MAF )  
Area of store =1200







**KIMPO**  
café and restaurant miriland  
(heliopolies)  
contain 2 levels 151 m

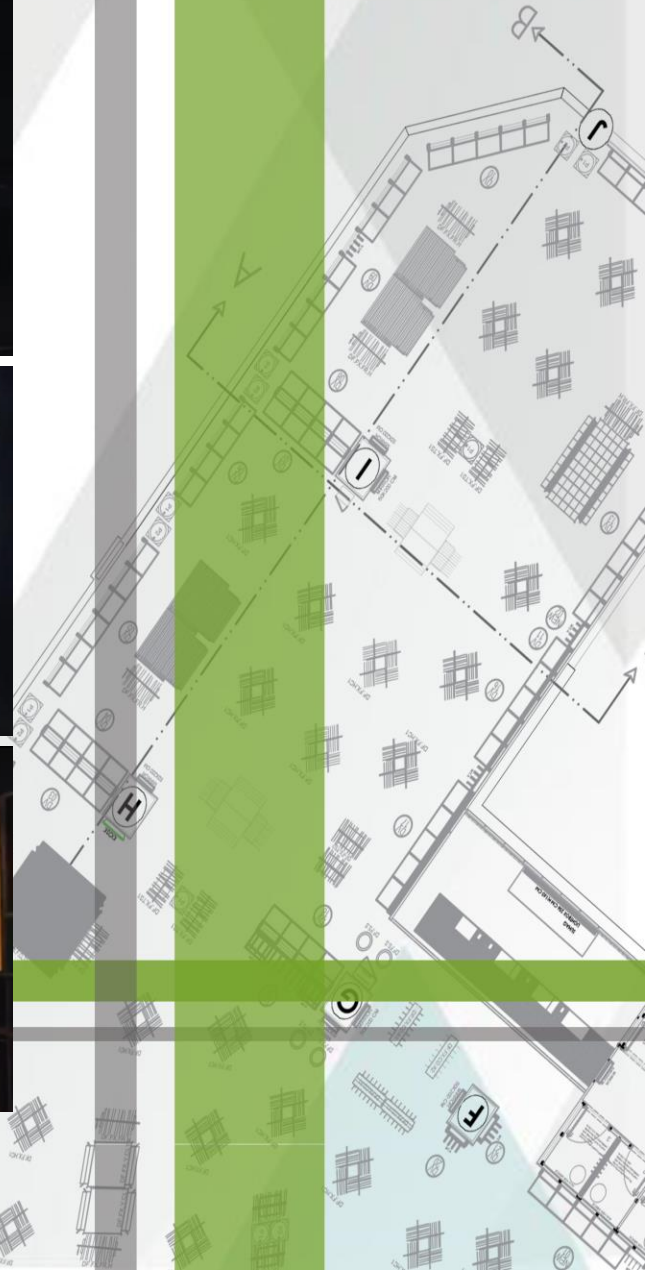


**Start:** 6-2019

**Finish:** 7-2019

**Review:** the project was handled from design coordination

up to grand opening (architecture work - electromechanical work – furniture work) .





**KIMPO**  
café and resturant miriland  
(heliopolies)  
contain 2 levels 151 m







## 2B LEGANDA MALL

total area 60 m2

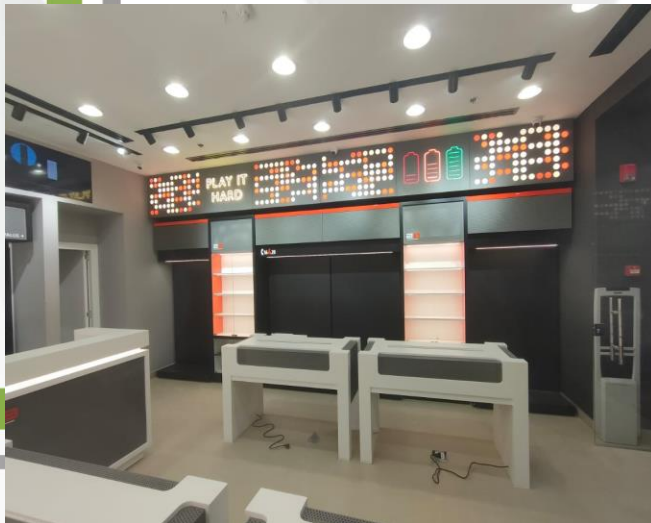




Start: 10-2021

Finish: 11-2021

Review: the project was handled from design coordination up to grand opening (architecture work - electromechanical work – furniture work) .

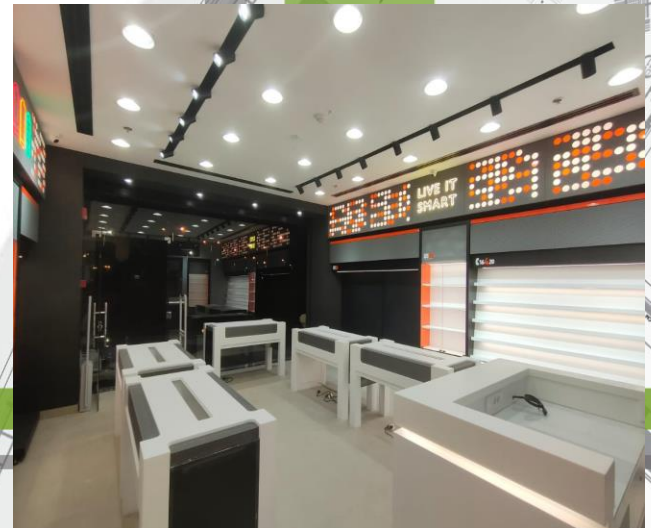
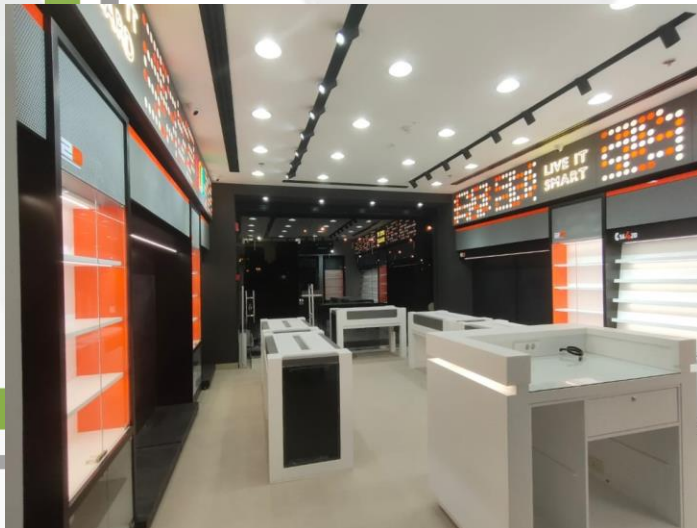




## 2B LEGANDA MALL

total area 60 m2

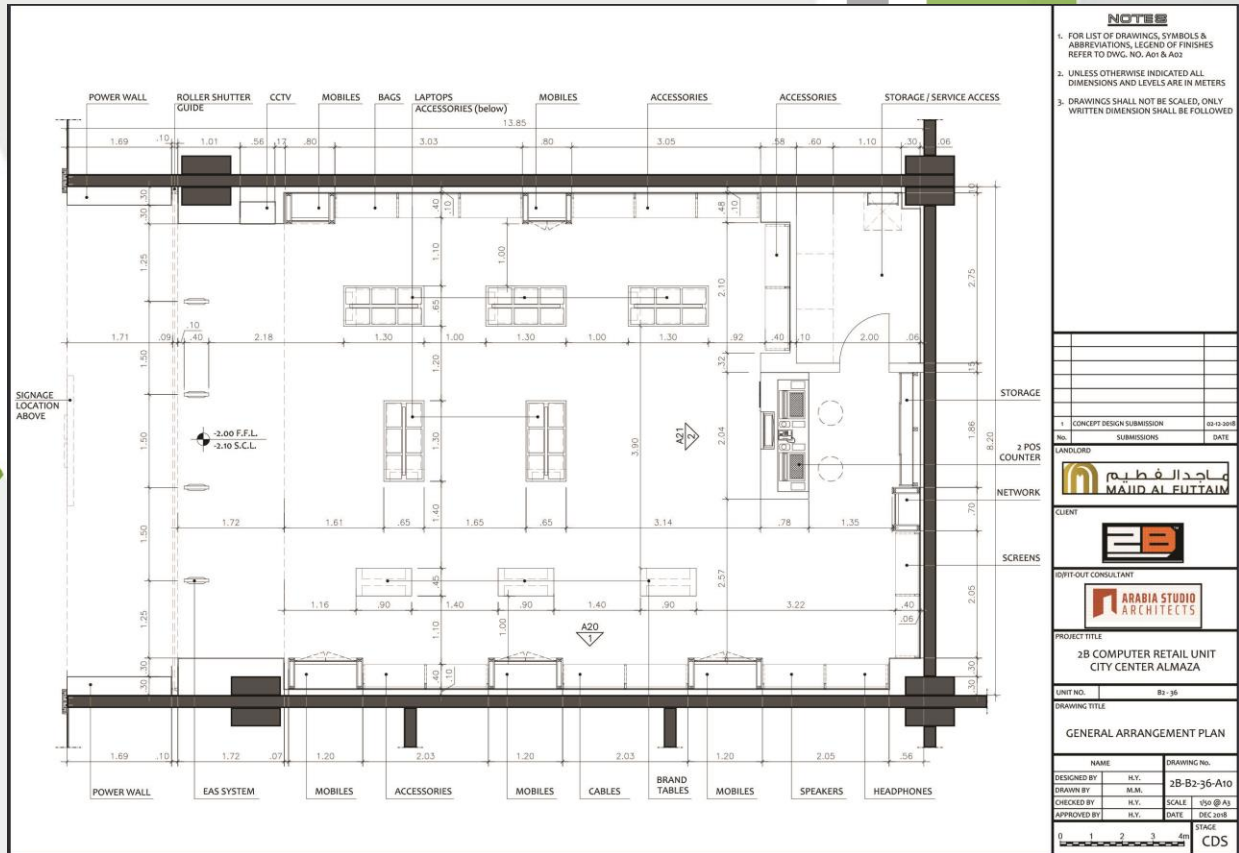






# 2B

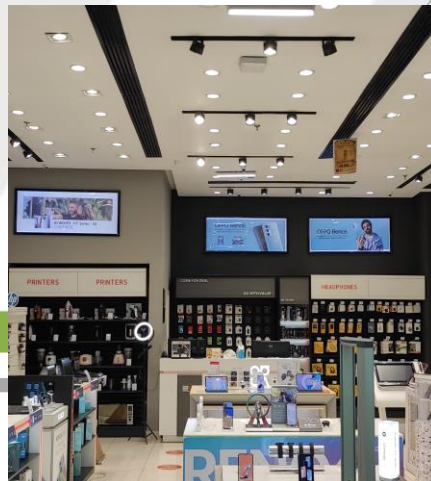
## City Center Almaza ( MAF ) Area of store =96 sqm



**Start:** 6-2019

**Finish:** 9-2019

**Review:** the project was handled from design coordination up to grand opening (architecture work - electromechanical work – furniture work) .





# ACTIV

ELSHAMS Club (heliopolies)

TOTAL AREA 450 M2

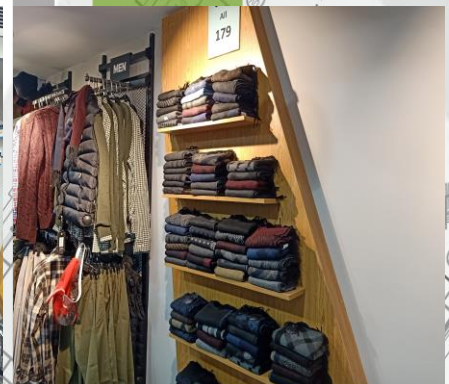


📍 11 Gamal Salem , Mossdak , Dokki , Giza    📧 [info@capitalgreenlimited.com](mailto:info@capitalgreenlimited.com)  
☎ 02 37493275    🌐 [www.capitalgreenlimited.com](http://www.capitalgreenlimited.com)

Start: 12-2024

Finish: 1-2021

Review: the project was handled from design coordination up to grand opening (architecture work - electromechanical work – furniture work) .





## ACTIV

ISMALIA Branch  
Area of store =155



📍 11 Gamal Salem , Mossdak , Dokki , Giza    📧 [info@capitalgreenlimited.com](mailto:info@capitalgreenlimited.com)  
☎ 02 37493275    🌐 [www.capitalgreenlimited.com](http://www.capitalgreenlimited.com)



Start: 12-2024

Finish: 1-2021

Review: the project was handled from design coordination up to grand opening (architecture work - electromechanical work – furniture work) .





## ACTIV

10 TH Ramadan : Outlet mall  
Area of store =450 sqm



📍 11 Gamal Salem , Mossdak , Dokki , Giza    📧 [info@capitalgreenlimited.com](mailto:info@capitalgreenlimited.com)  
☎ 02 37493275    🌐 [www.capitalgreenlimited.com](http://www.capitalgreenlimited.com)

**Start:** 3-2021

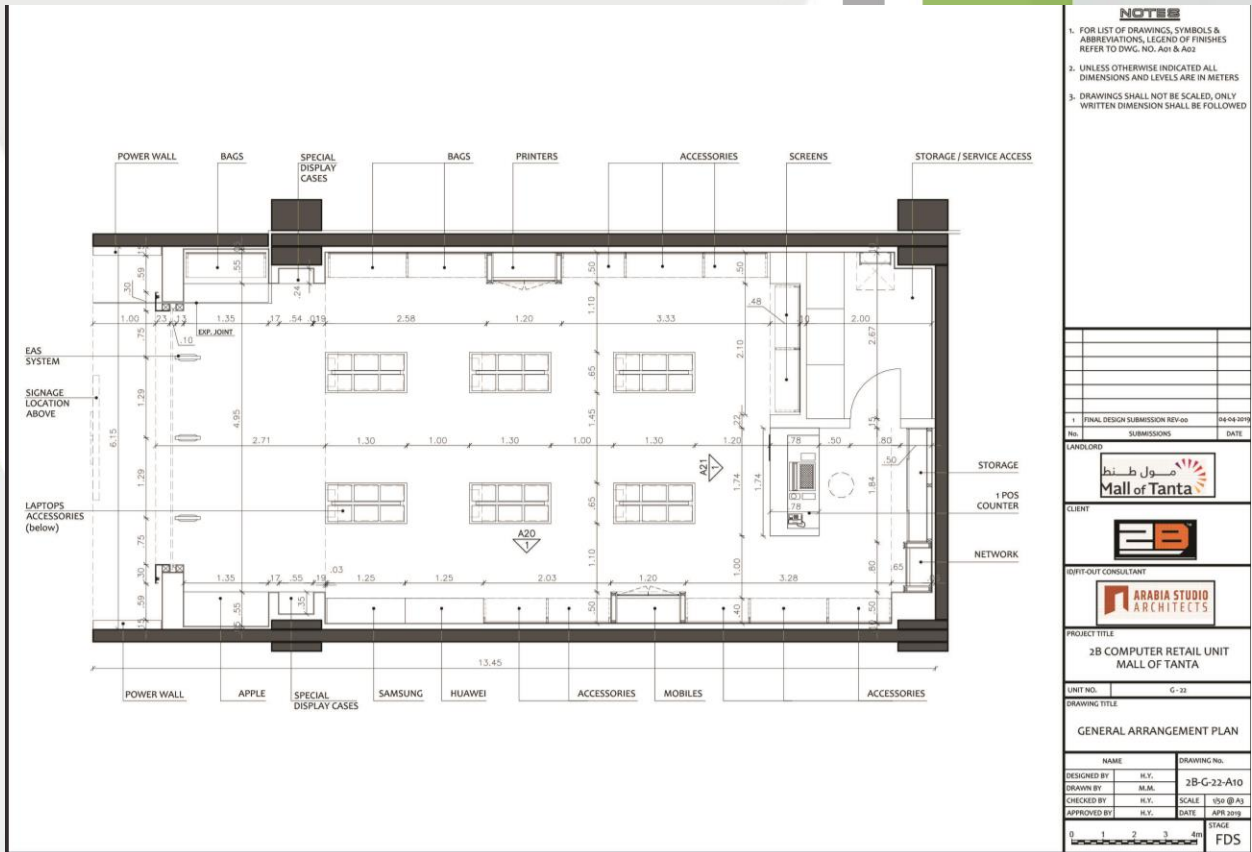
**Finish:** 4-2021

**Review:** the project was handled from design coordination up to grand opening (architecture work - electromechanical work – furniture work)





# 2B Computer MALL OF TanTa Total Area :84 m2



**NOTES**

- FOR LIST OF DRAWINGS, SYMBOLS & ABBREVIATIONS, LEGEND OF FINISHES REFER TO DWG. NO. A01 & A02
- UNLESS OTHERWISE INDICATED ALL DIMENSIONS AND LEVELS ARE IN METERS
- DRAWINGS SHALL NOT BE SCALED, ONLY WRITTEN DIMENSION SHALL BE FOLLOWED

1	FINAL DESIGN SUBMISSION REV-00	04-04-2019
No.	SUBMISSIONS	DATE

LANDLORD  
**ممول طنط**  
**Mall of Tanta**

CLIENT

DRIFT-OUT CONSULTANT  
**ARABIA STUDIO ARCHITECTS**

PROJECT TITLE  
**2B COMPUTER RETAIL UNIT  
 MALL OF TANTA**

UNIT NO.  
 G-22

DRAWING TITLE  
**GENERAL ARRANGEMENT PLAN**

NAME		DRAWING No.	
DESIGNED BY	H.Y.	SCALE	2B-G-22-A10
DRAWN BY	H.M.	SCALE	1/50 @ A3
CHECKED BY	H.Y.	DATE	APR 2019
APPROVED BY	H.Y.	DATE	APR 2019

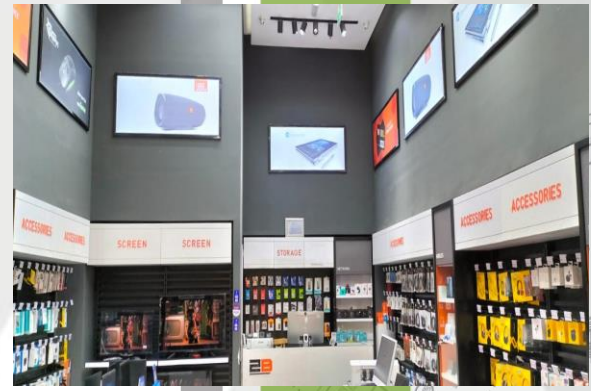
STAGE  
 0 1 2 3 4m  
**FDS**

**Start:** 6-2019

**Finish:** 8-2019

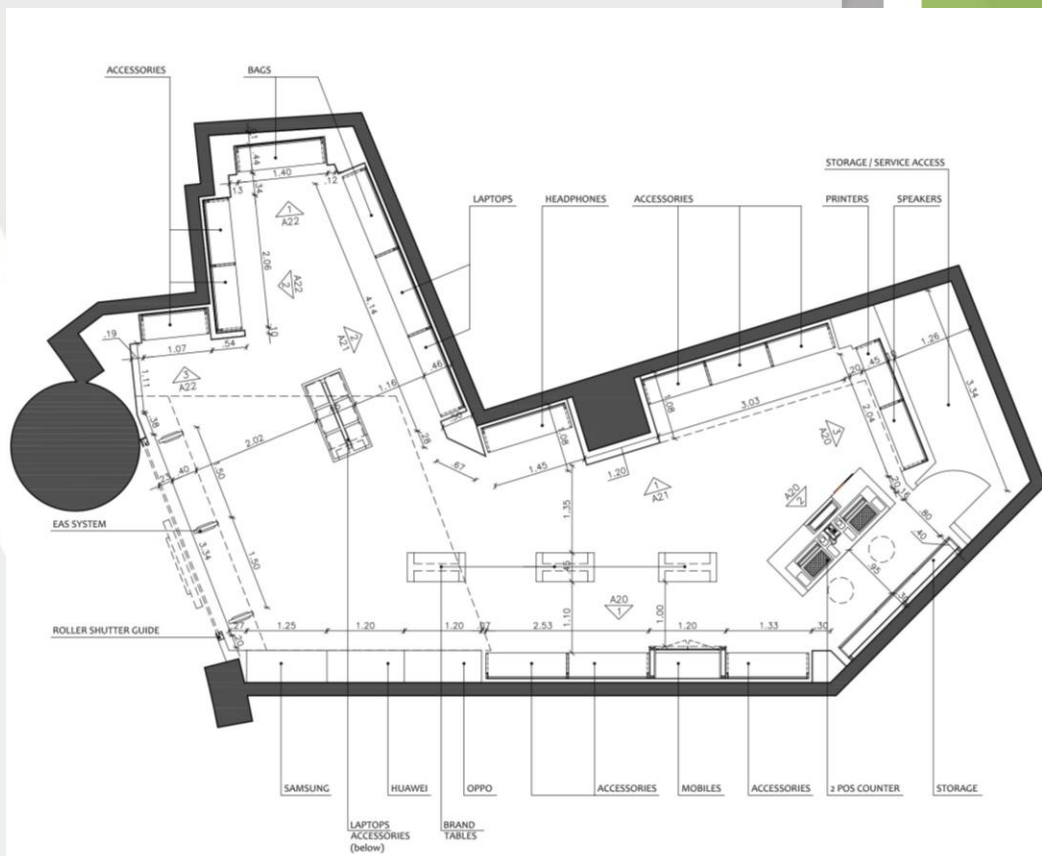
**Review:** the project was handled from design coordination

up to grand opening (architecture work - electromechanical work – furniture work) .





2B San Stefano Mall  
(Talaat Mostafa)  
Area of store = 76



NOTES

- FOR LIST OF DRAWINGS, SYMBOLS & ABBREVIATIONS, LEGEND OF FINISHES REFER TO DWG. NO. A01 & A02
- UNLESS OTHERWISE INDICATED ALL DIMENSIONS AND LEVELS ARE IN METERS
- DRAWINGS SHALL NOT BE SCALED, ONLY WRITTEN DIMENSION SHALL BE FOLLOWED

1. CONCEPT DESIGN SUBMISSION REV 00 07/04/2019

No. SUBMISSIONS DATE

LANDLORD



CLIENT



IDRIFT-OUT CONSULTANT



PROJECT TITLE

2B COMPUTER RETAIL UNIT  
SAN STEFANO MALL

UNIT NO. 207

DRAWING TITLE

GENERAL ARRANGEMENT PLAN

NAME

DESIGNED BY H.Y. DRAWING NO. 2B-207-A10

DRAWN BY H.M.

CHECKED BY H.Y. SCALE 1/50 @ A3

APPROVED BY H.Y. DATE APR 2019

STAGE

0 1 2 3 4m CDS

Start: 4-2019

Finish: 5-2019

Review: the project was handled from design coordination up to grand opening (architecture work - electromechanical work – furniture work) .





## BELLA DONNA

City Center Alexandria (MAF)

Area of store =120 sqm



📍 11 Gamal Salem , Mossdak , Dokki , Giza    📧 [info@capitalgreenlimited.com](mailto:info@capitalgreenlimited.com)  
☎ 02 37493275    🌐 [www.capitalgreenlimited.com](http://www.capitalgreenlimited.com)



**Start:** 2-2019

**Finish:** 3-2019

**Review:** the project was handled from design coordination up to grand opening (architecture work - electromechanical work – furniture work) .





## PHIZER

(Dokki-Giza) Head Quarter  
Storage Area of store =300 sqm



📍 11 Gamal Salem , Mossdak , Dokki , Giza    📧 [info@capitalgreenlimited.com](mailto:info@capitalgreenlimited.com)  
☎ 02 37493275    🌐 [www.capitalgreenlimited.com](http://www.capitalgreenlimited.com)

**Start:** 12-2019

**Finish:** 2-2020

**Review:** the project was handled from design coordination up to grand opening (architecture work - electromechanical work – furniture work) .





# ELNASR STORE

Alexandria (3D Design only)

Start: 1-2019



📍 11 Gamal Salem , Mossdak , Dokki , Giza  
☎ 02 37493275

✉ info@capitalgreenlimited.com  
🌐 www.capitalgreenlimited.com

Elnasr Store : Alexandria  
3D Design only  
Start: 1-2019





# ELNASR STORE

Fayoum (3D Designs only )

Start: 3-2019



📍 11 Gamal Salem , Mossdak , Dokki , Giza    📧 info@capitalgreenlimited.com  
☎ 02 37493275    🌐 www.capitalgreenlimited.com

# Elnasr Store : fayoum

Start: 3-2019

3D Designs only





ELNASR STORE  
October ( 3D Design only )  
Start: 4-2019

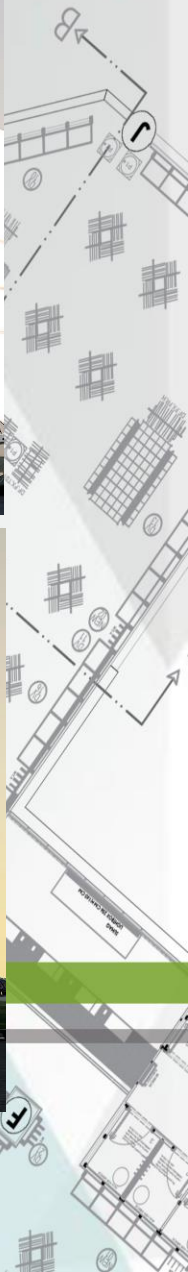




# Elnasr Store : October

Start: 4-2019

3D Designs only





# ELNASR STORE

October 2 (3D Designs Only)

Start: 6-2019

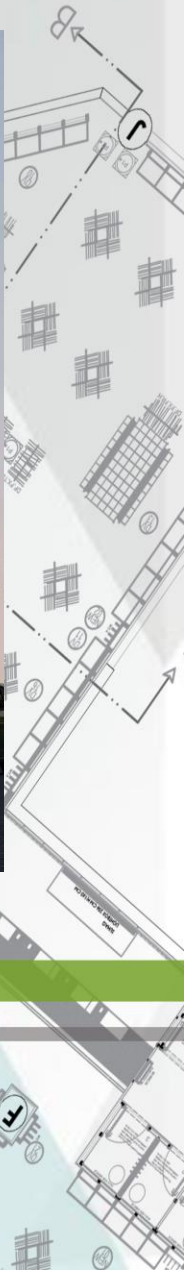


📍 11 Gamal Salem , Mossdak , Dokki , Giza    📧 [info@capitalgreenlimited.com](mailto:info@capitalgreenlimited.com)  
☎ 02 37493275    🌐 [www.capitalgreenlimited.com](http://www.capitalgreenlimited.com)

Elnasr Store : October 2


Start: 6-2019

3D Designs Only





 11 Gamal Salem , Mossadk , Dokki , Giza

 02 37493275

 [info@capitalgreenlimited.com](mailto:info@capitalgreenlimited.com)

 [www.capitalgreenlimited.com](http://www.capitalgreenlimited.com)